



95U3 Series
3.5 Inch External HDD Enclosure

User Manual

Catalog

What is in the box 2

Product Introduction 2

Specifications 3

Product features 3

Product Illustration 4

Hard-drive Format Partition Operation 6

Failure Solutions 9

Remove the Device 10

Attention 10

Notice 10

Declaration 11

FCC 12

Thanks for choosing ORICO!
Please read this user’ s manual carefully before using it!

What is in the box

1. The Product.....1PCS
2. Data Cable.....1PCS
3. Power Cord/ Power Adapter.....1PCS
4. Key.....2PCS
5. User Manual.....1PCS
6. Thanks Card.....1PCS

The product, accessories and package may optimized for better application performance. We sincerely sorry that they may not exactly match with what showing in manual and appreciate your please adhere to the original products and contact ORICO customer care team if any further concern. Thank you very much.

Product Introduction

This series of hard drive enclosure focus on data storage for desktop users, adopted tool-free design, with delicate appearance, which making installing hard drive an enjoyable experience; USB3.0 interface adopted USB3.0 to SATA3.0 6Gbps control scheme, supporting USB3.0 5Gbps high-speed transmission.

Specifications

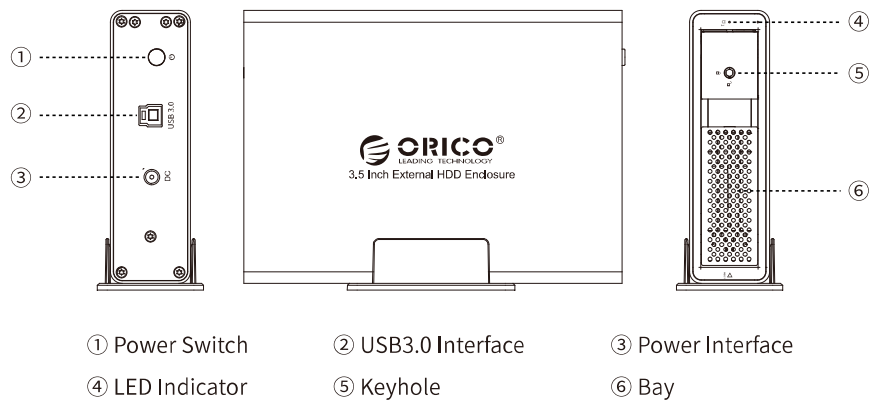
Model	95U3 Series
Material	Aluminum Alloy
Surface	Frosted
Input	SATA3.0
Output	USB3.0 Type-B
Transmission Rate	5Gbps
Data Cable	USB Type-A/M To USB Type-B/M
Power Supply	9558U3 AC100-240V Power Cord 9548U3 AC100-240V Power Cord 9528U3 12V---3A Power Adapter 9518U3 12V---2A Power Adapter
Dimensions	9558U3 264(L)×146(W)×199.5(H)mm 9548U3 264(L)×146(W)×164.5(H)mm 9528U3 235(L)×145(W)×93.5(H)mm 9518U3 196(L)×54.5(W)×143.5(H)mm

Product features

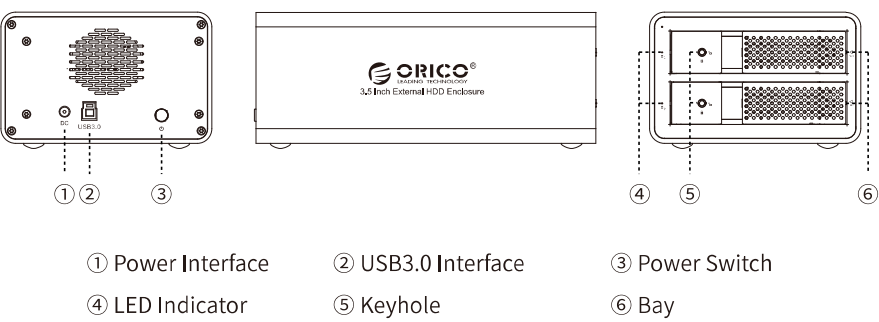
1. Tool-free, support hot-swapping, plug and play.
2. Adopts SATA3.0 6Gbps bridging scheme.
3. USB interface conforms to USB3.0 standard and supports to 5Gbps transmission rate.
4. LED indicator for monitoring the working status of the disk at any time.
5. Equipped with lock hole, fenestration design, to protect your data.
6. 5-Bay and 4-Bay version built-in 150W high-power power supply.
7. Intelligent sleep, save energy, environment protection, prolong service life.

Product Illustration

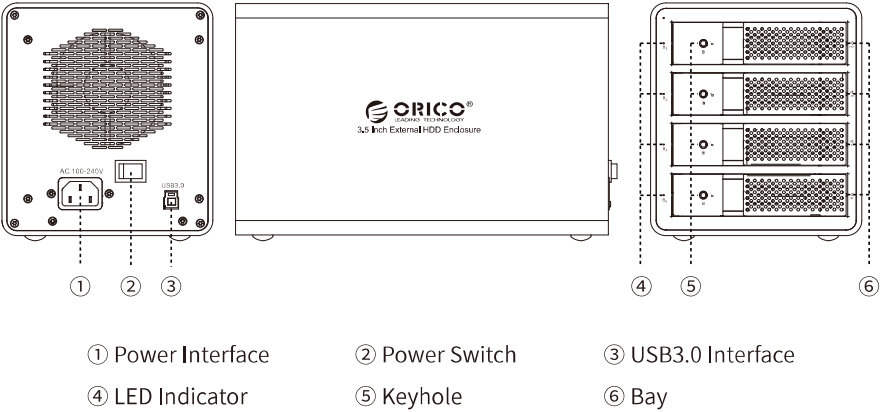
9518U3



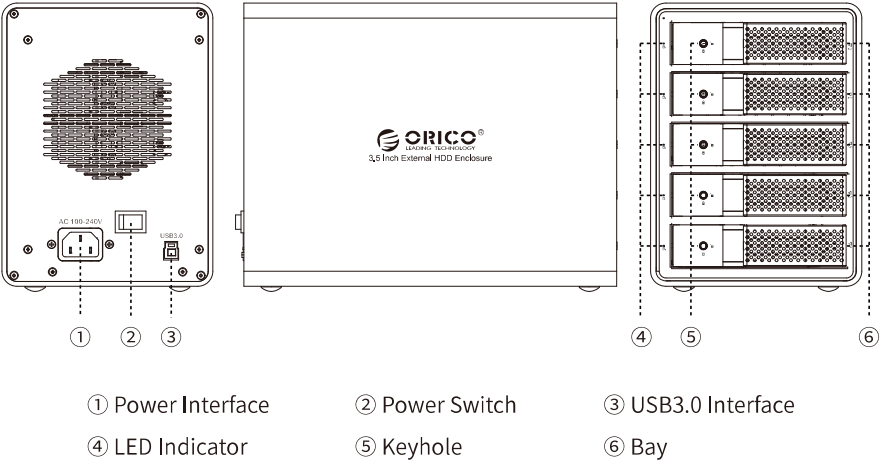
9528U3



9548U3



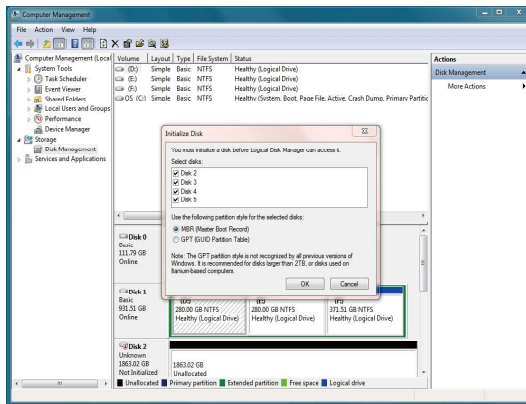
9558U3



Hard-drive Format Partition Operation

You need to initialize and format the partition first, otherwise it won't work properly. If it is a brand-new hard drive, please initialize and format the partition according to the following steps:

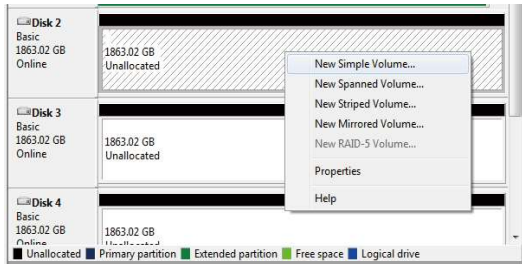
1. Please ensure the ORICO enclosure is installed properly, and connected to the computer.
2. Right click “My Computer”, then select “Computer Management”, tap or click “Disk Management” on the left side of the window when “Computer Management” opens, then select “MBR” or “GPT” partition form and click “OK”



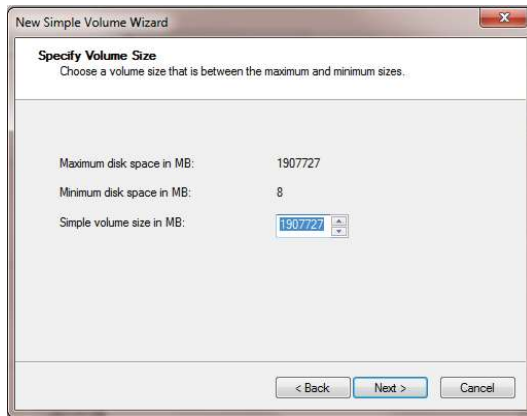
Note:

- If the disk capacity is less than 2TB, please use MBR partition form to initialize the hard disk.
- If the disk capacity is greater than 2TB, the disk must be initialized by using of GPT partition form, otherwise only 2TB capacity will be available and the excess capacity will not able to use.

- (3) Right click the "unallocated" disk space, select "new simple volume" to start formatting the hard drive partition



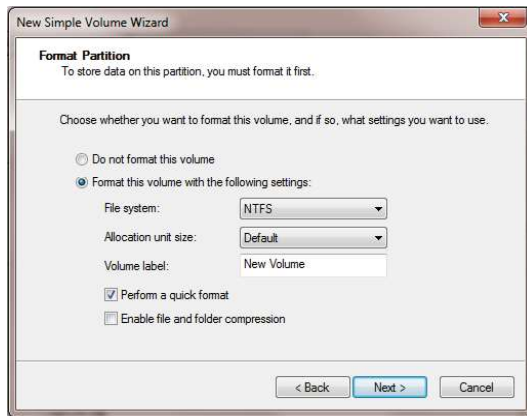
- (4) When setting the capacity of disk partition, can customize the partition capacity, or set the default maximum simple volume size, and there will be only one disk partition.



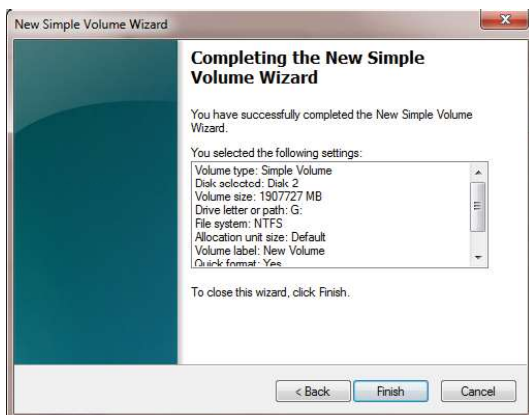
- (5) Allocating the drive letter and path, (e.g. Explorer, C, D, E, F, G drive) drive letter.



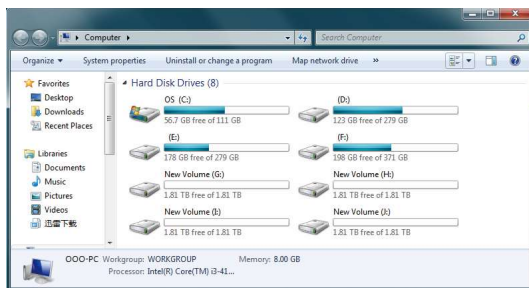
- (6) Format partition, able to set file system format (NTFS, FAT32 or exFAT), assign unit size (default set), volume label name, recommend "perform quick format", and click "next" when configuration is completed



(7) Click "finish" to perform the final step of formatting partition.



(8) It will take 5-30 seconds, and the new partition drive letter will be displayed in the explorer after formatting.



Failure Solutions

If the product cannot be recognized in the computer, please try to solve the issue according to the following methods:

- Under XP system, due to the system limit of XP itself, the hard drive with capacity of more than 2TB cannot be normally used. You can update the system to WIN7.

- If the hard drive cannot be displayed in the WIN7 system, you can check whether the hard drive is new or not. The new hard drive needs to be initialized in the computer management before use.

Remove the Device

Attention: Do not forcibly remove the hard drive enclosure and disks to avoid data damage or loss.

1.Remove devices from Windows

To stop using the device, click the "safely remove hardware and media" button in the lower right corner of the taskbar, and then click the device to be removed. When the system prompts "safely remove hardware", that means the device has been successfully removed from the system and it can be unplugged from the computer.

2.Remove devices from Mac OS

To stop using the device, select the device, and move it to the trash bin.

Attention

1. The hard drive is precision device, please refer to operation manual in advance and correctly operate it.
2. Please do not disassemble or Repair this product by yourself.
3. Please do not puncture or crush this product and keep it away from high and low temperature, damp and dusty conditions.
4. You will need to initialize the hard drive to work properly if you are using a new hard drive.

Notice

1. Please do not hit, throw, or puncture the product, and avoid dropping, squeezing, or bending.

2. Please do not use or store this product in a humid environment and avoid being wetted or rinsed with liquids.
3. Please do not use the product in a hot, high-dust environment and keep it away from fire.
4. Please do not expose this product to the sun.
5. Please do not place this product in a corrosive environment. Do not use other chemical solutions to clean the product.
6. Please keep the product and accessories away from children. Do not allow children to use the product without supervision.
7. Please do not disassemble and repair the product or accessories without the authorization of ORICO.
8. If you have any questions during the use of this product, please feel free to contact your dealer or ORICO Customer Service Center.

Declaration

ORICO Technologies Co., Ltd., all rights reserved.

Thank you so much for purchase ORICO product. Please refer to this manual when using orico product or experienced issues. Additionally, please kindly contact ORICO customer care team if any concern.

ORICO® is registered trademark of ORICO TechnologiesCo., Ltd.. Any other product, trademark, service or company mentioned herein is trademark or registered trademark of the respective owners.

This manual is for reference only and it's not a guarantee.

ORICO Technologies Co., Ltd. reserve all rights of maintenance to this manual and shall not liable for any lost or damage resulting from this manual. Please kindly contact orico customer care team when any concern.

ORICO Technologies Co., Ltd shall not liable for compensation and maintenance of the following conditions.

1. Any special, incidental, indirect and secondary lost or damage.
2. Profit and revenue lost or damage.
3. Files, data, drive and device lost or damage.

Note: Compensation for lost or damage resulting from This manual or orico product shall not exceed the payment of your purchase to this product.

FCC

This device complies with part 15 of the FCC Rules.

Operation is subject to the following two conditions:(1) This device may not cause harmful interference, and (2)this device must accept any interference received, including interference that may cause undesired operation.



www.orico.cc

ORICO Technologies Co.,Ltd.

Hotline: 400-6696298

Tel: 86-755-25196059

Website: www.orico.cc

E-mail: supports@orico.com.cn

Company Add: 19/F, Block 14A, Zhonghaixin Science &Technology Park, Longgang District, Shenzhen, China

Factory Add: Room 201, Building 11, No. 24, Tangjiao Road, Changping Town, Dongguan City, Guangdong, China
